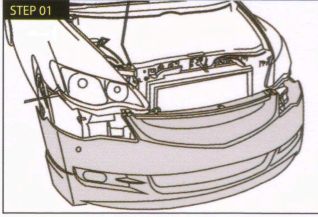
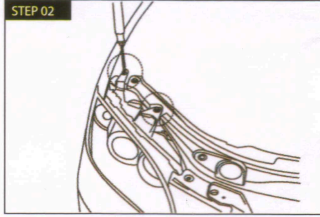


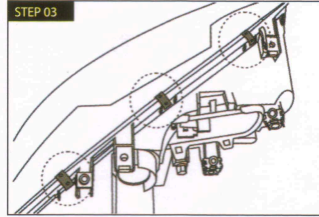
CCFL Angel Eyes Installatio Instruction



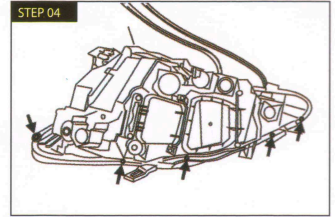
Check the vehicle if need to release the bumper first then be able to take the headlight assembly out.



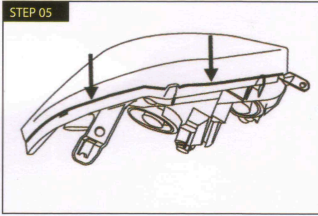
Release the screws that fix the assembly on the vehicle then take it out.



Remove the clips the hold the front and back part of the assembly.

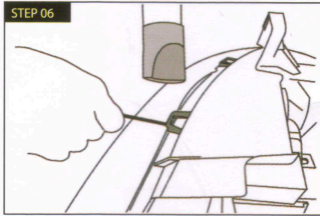


Check the backside of the assembly, there may be some of the screws needs to be removed.

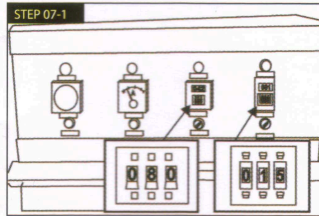


Check the assembly if its front and back housing is attached with sealant. If not sealed, you can take the assembly apart after removing the clips and screws. (skip to step 10)

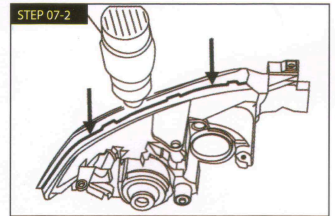
If there sealant applied, you must go over the step 6-9



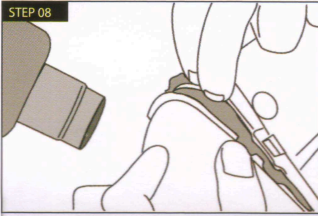
Pry the plastic clips and heat blow with a hair dryer. Pre-open these clips will help the later opening faster and easier.



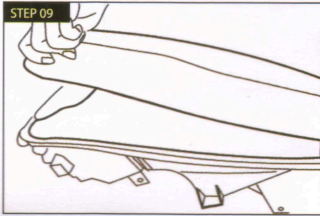
This step is to soften the sealant. If you have a big oven available to bake the assembly, pre-heat the oven to 80 centigrade and keep constantly this temperature, put the assembly in, bake for 15 minutes. Note, take off all the bulbs (high/low beam, parking light and turn signals etc.) before put the assembly into the oven.



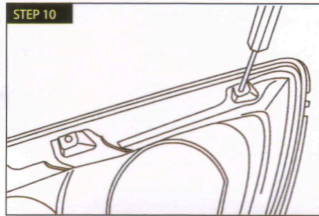
If you do not have oven, then you can use heatgun or hair dryer blowing along the seam to soften the sealant. With this method, you may need an assistant to help with blowing.



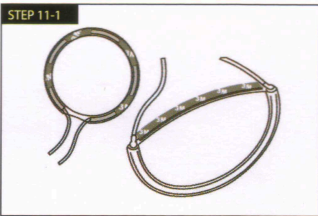
When the sealant is fully softened, keep blowing and pry from the angle of the assembly, and pull them apart with fingers.



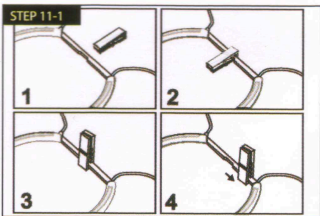
Once the angle is opened, blowing along the seams, gently separate the assembly.



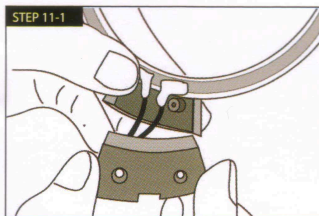
The CCFL angel eyes kit is mostly installed on the chrome trim/reflector. Some of the vehicles the chrome trim/reflector is fixed with the front clear cover, you may need to release clips or screws to take it out.



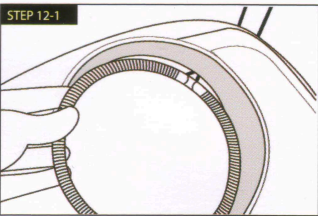
Prepare the angel eyes rings. According to the characters of every headlamp, there are some methods of ring fixation. It may use 3M double side sticker or adhesive glue.



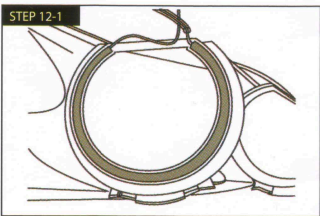
Some models may need to set up the clips.



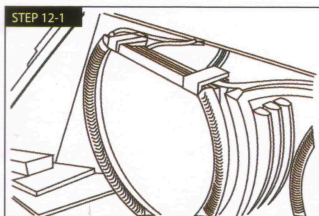
Some of the models may need to set up the ring to a holder first.



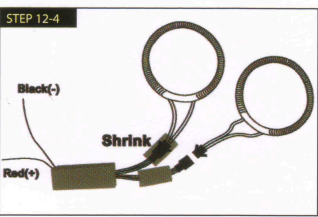
Fit the ring to chorme trim/reflector. Some of the rings must be inserted from the front side, then slightly move the ring until you get the best position for it.



Some of the rings must fit it from back side.

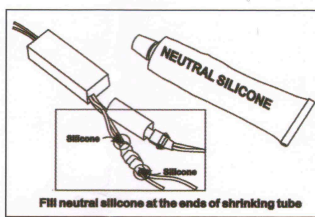


And some of the ring is just clip it to the flat part of the chrome trim/reflector.



Connect the angel eyes with inverter and shrink the connecting site. Power supplied from daytime running light.

CCFL angel Eye is powered by high voltage AC electricity (the starting voltage is 1500 VAC and the working voltage 700 VAC), therefore, we highly suggest you to keep the inverter inside of the headlamp assembly. In case you have to leave the inverter outside of the assembly, we recommend the following solution to prevent the inverter getting wet form rain or car wash and cause an electric short and fatal damage of inverter.



⚠ We do not give replacement for defective if this installation step is not done.

Specification of CCFL Angel Eyes Kit

Color Temperature	K	7000 ± 200	For safety concern, do not cut or lengthen the WHITE high-voltage silicon wires.
Current	Arms	5.0 ± 0.5	
Output Voltage	Vrms	1400 ± 10%	
Lumen Voltage	Vrms	700 ± 10%	
Frequency	Khz	40 ± 10%	
Wattage	IL x VL	3.5 ± 10%	
Brightness	Cd/m	32000 ± 10%	
Input Voltage	Vdc	12	
Life Time	Hr	≥ 15000	